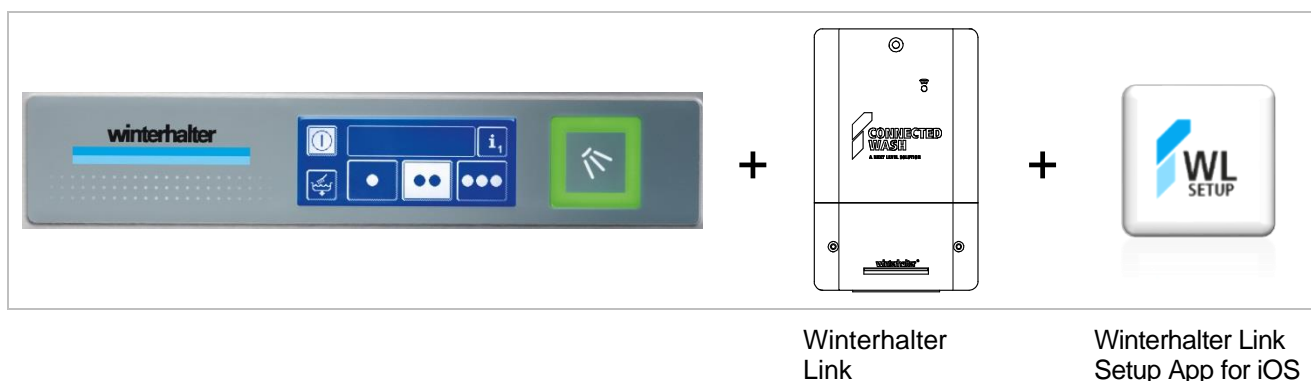


CONNECTED WASH

Connecting the machine to the network

This manual applies to the following machines with blue display:

- UC-Series (UC-2009)
- PT-Series
- UF-Series



Have you already registered at www.connected-wash.com/start? Are all requirements met for CONNECTED WASH (see: <http://www.connected-wash.com/faq>)? Then you can connect the machine to your network in 3 steps.

Step 1

Connect the machine to the network.

- LAN (► 2)
- WLAN (► 3)
- Mobile network (UMTS) (► 4)

Step 2

Check connection.

► 5

Step 3

Check the date and time.

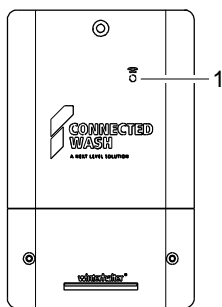
► 6

1. Winterhalter Link

General information

Winterhalter Link establishes the warewasher connection to the Winterhalter server. Winterhalter Link requires approx. 3 minutes to start up the operating system after connecting it to the mains supply. Then it sends Bluetooth signals for 30 minutes and is visible as a Bluetooth device. Establish a connection to the Winterhalter server in this time. To do this, use the Winterhalter Link SETUP app. As soon as the connection is established to the Winterhalter server, Winterhalter Link will no longer be visible as a Bluetooth device for security reasons.

Meaning of LED colours

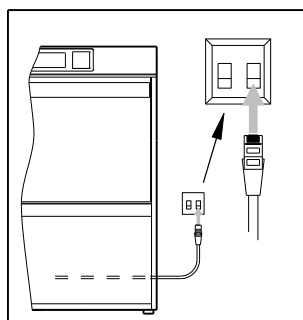


LED	Meaning
not lit	No power supply
red	<ul style="list-style-type: none">WLAN version: no connection to WLANMobile network version (UMTS): no connection to the internet
flashing green	<ul style="list-style-type: none">WLAN version: Connection to WLAN establishedMobile network version (UMTS): connection to internet established
lit green	Connection to Winterhalter server established

Restoring factory setting

- Hold the magnet on the LED (1).
 - ⇒ The LED glows white.
- Remove the magnet after 10 seconds.
 - ⇒ The LED is not lit at first and then glows red as soon as the operating system starts up.

2. LAN version



- Ensure that the LAN cable is connected.
- Switch on the machine and let it fill.
- Continue with chapter ► 5.

INFO

If you use a MAC filter: share the warewasher's MAC address. You will find the MAC address in the PIN Menu of the warewasher (see Chapter "Check connection" in the operating instructions, which you can download from www.winterhalter.com/download-centre).

3. WLAN version

Conditions

To successfully connect the machine to your network, the following conditions must be met:

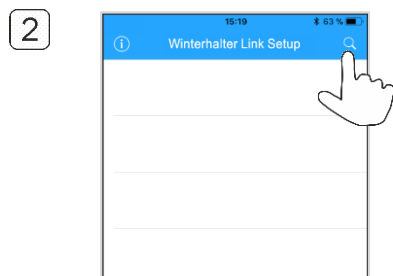
- An authorised service technician has fitted the Winterhalter Link next to the warewasher and connected it to the machine.
- An Internet-enabled terminal device (e.g. tablet or smartphone) with iOS operating system is present.
- The Winterhalter Link Setup app (WL Setup app) is installed on your tablet or smartphone. The app is available in the Apple App Store.
- The WLAN password for your network is to hand.

IMPORTANT If you change your WLAN password or the network name (SSID) on your network router, your machine will lose its connection to your network. Then you have to reconnect Winterhalter Link to the network using this manual.

INFO If you use a MAC filter: Share the Winterhalter Link's MAC address. You can find the MAC address on the rear of the device and inside the lower front cover.

Connecting to the network

- 1 ➤ Open the WL SETUP app.



INFO

It can take up to 5 minutes for Bluetooth devices to be displayed in step 5.

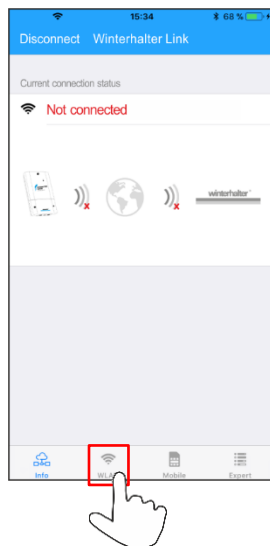


Signal strength

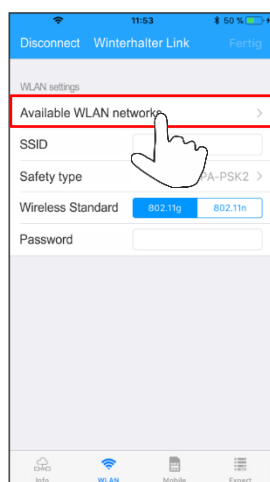
INFO

If several Bluetooth devices are displayed, select the Winterhalter Link with the highest signal strength.

4



5



➤ Select your own network.

INFO Repeat several times if required. It can take up to 2 minutes for networks to be displayed.

If your own network is set up to be invisible:

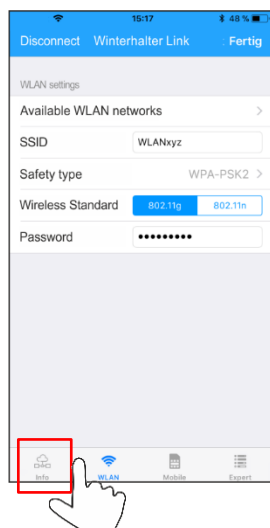
➤ Manually enter the SSID (network name).

6

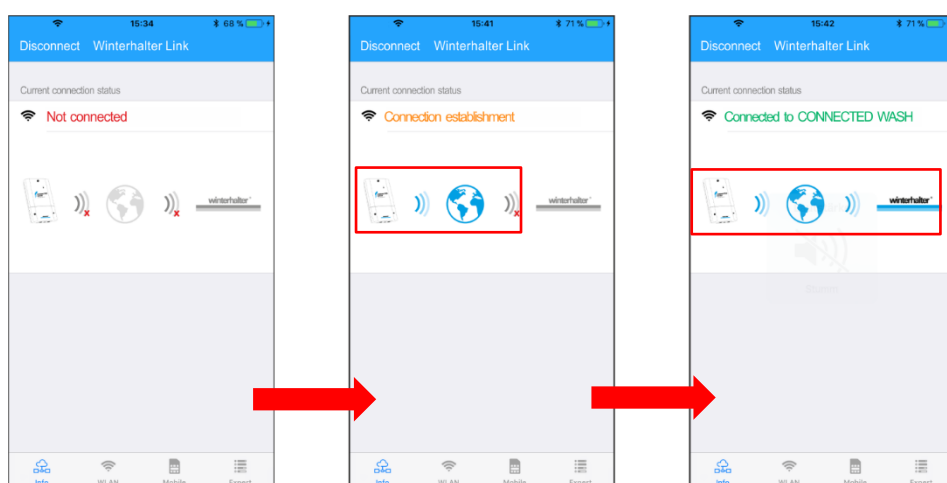


➤ Enter the WLAN password.

7



8

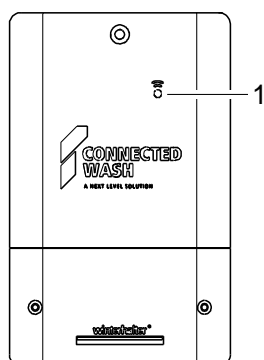


The connection is established.

Winterhalter Link is connected to the selected network.

Winterhalter Link is connected to the Winterhalter server.

9



⇒ The LED (1) glows **steady green**.

Configuration is finished.

➤ Continue with chapter ► 5.

4. Mobile network version (UMTS)

INFO If there is no LAN connection and no WLAN reception at the warewasher's installation site, you require a WLAN/UMTS design Winterhalter Link and a micro SIM card with a data plan for mobile internet. Winterhalter Link has order number 60005504.

Conditions

To successfully connect the machine to a mobile network, the following conditions must be met:

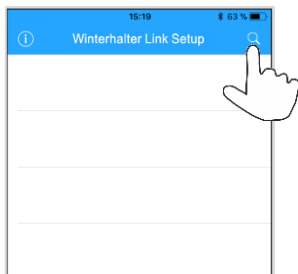
- An authorised service technician has fitted the Winterhalter Link with SIM card next to the warewasher and connected it to the machine. Winterhalter Link connects the warewasher to the Winterhalter server via a mobile network.
- An Internet-enabled terminal device (e.g. tablet or smartphone) with iOS operating system is present.
- The Winterhalter Link Setup app (WL Setup app) is installed on your tablet or smartphone. The app is available in the Apple App Store.
- The WLAN password for your network is to hand.

Connecting to the mobile network

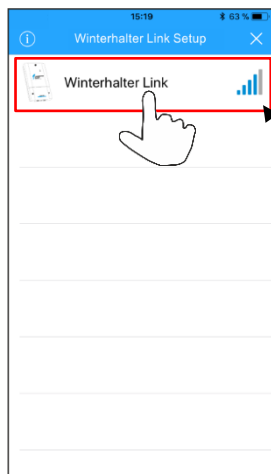
- 1 ➤ Open the WL SETUP app.



- 2 **INFO** It can take up to 5 minutes for Bluetooth devices to be displayed in step 5.

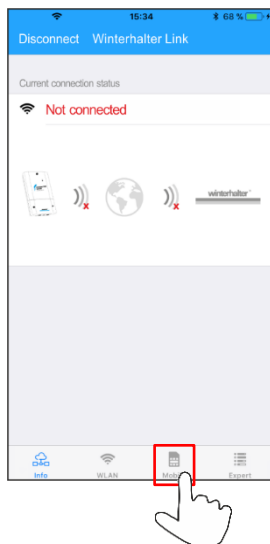


- 3
- Signal strength

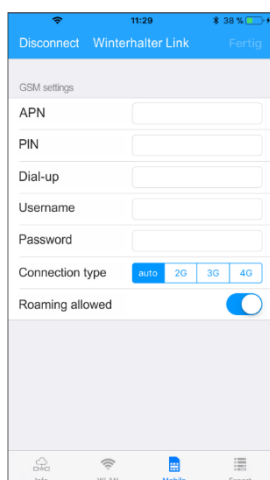


INFO If several Bluetooth devices are displayed, select the Winterhalter Link with the highest signal strength.

4



5



➤ Enter your mobile network provider's APN dial-up data.

Example for T-Mobile:

APN: internet.telekom

SIM card pin

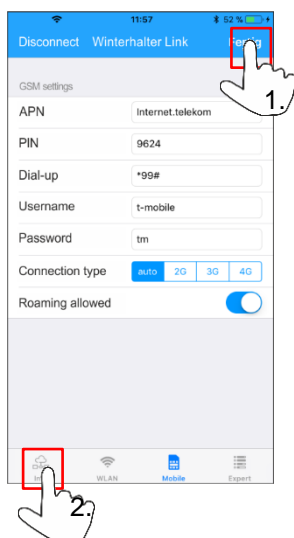
Dial-up: *99#

Username: t-mobile

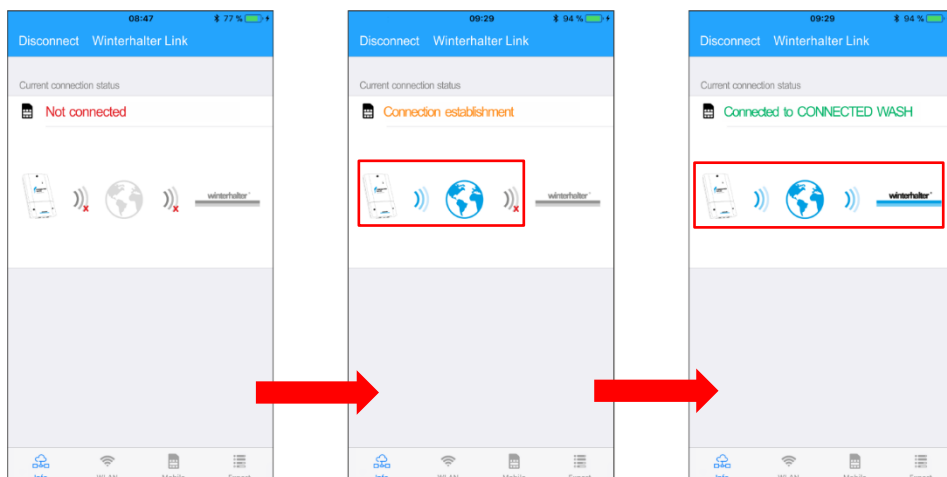
Password: tm

You can find other providers' APN data on the internet.

6



7

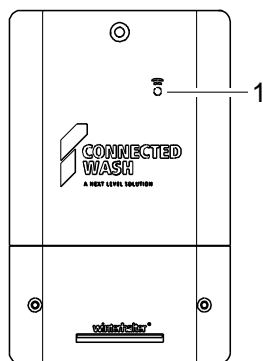


The connection is established.

Winterhalter Link is connected to the internet.

Winterhalter Link is connected to the Winterhalter server.

8



⇒ The LED (1) glows **steady green**.

Configuration is finished.

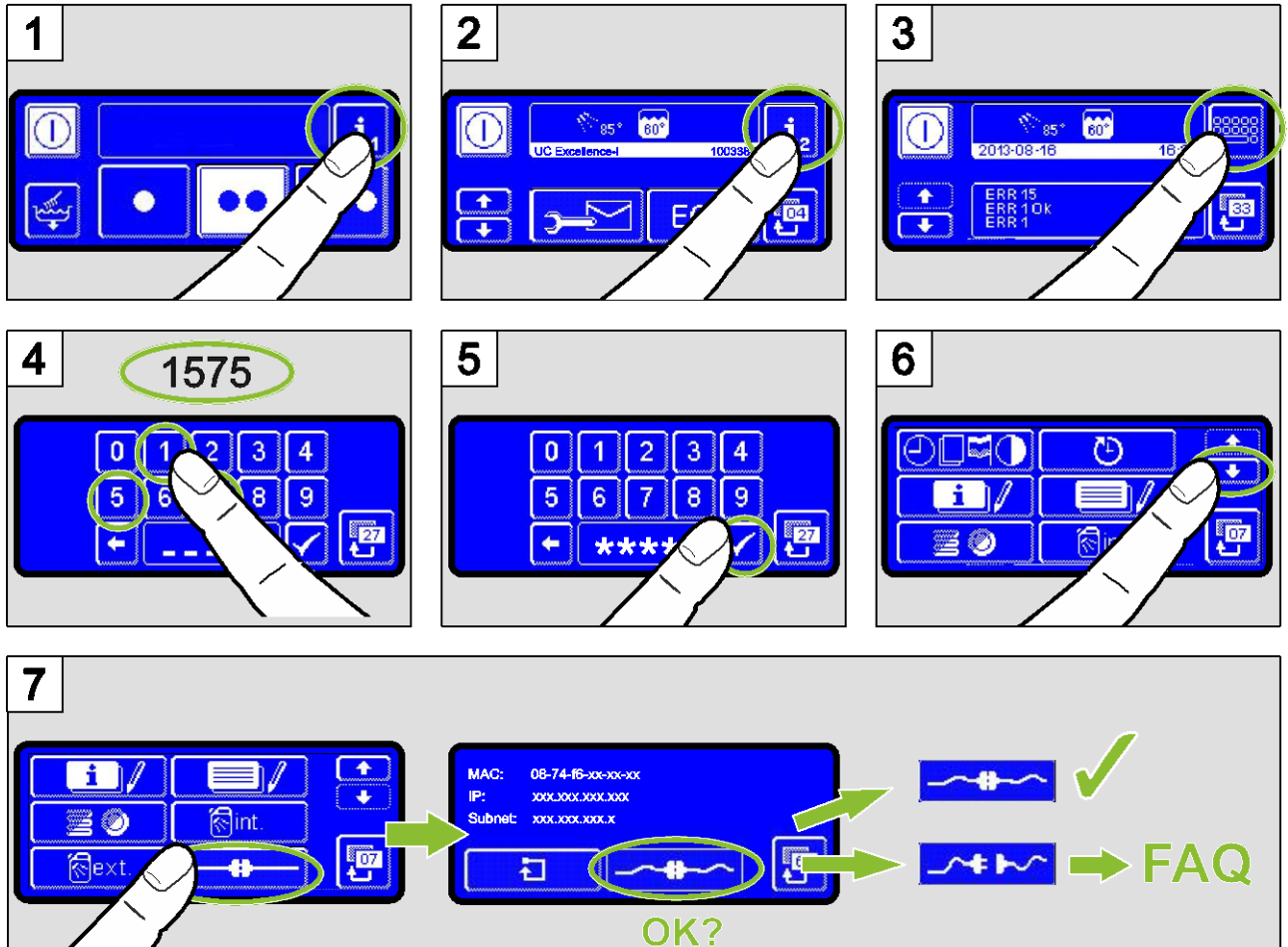
➤ Continue with chapter ► 5.

5. Checking the connection

In this step, check if there is a connection between the machine and network router / Winterhalter Link.

IMPORTANT The machine must be operational for this step.

- Switch off the machine and wait 5 seconds before switching on again.
- Access PIN Menu:

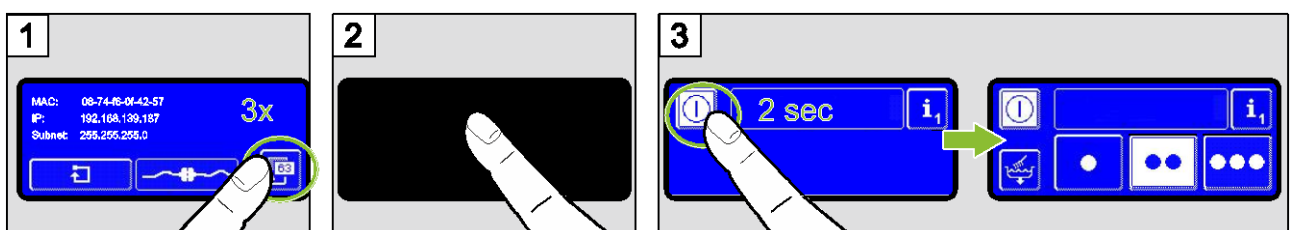


If the plugs in Image 7 are not connected, wait approx. 30 seconds. If the plugs are still not connected after this time, please follow the instructions in our FAQ:

<http://www.connected-wash.com/faq>. Here you will also find an analysis tool that can be used for searching for errors.



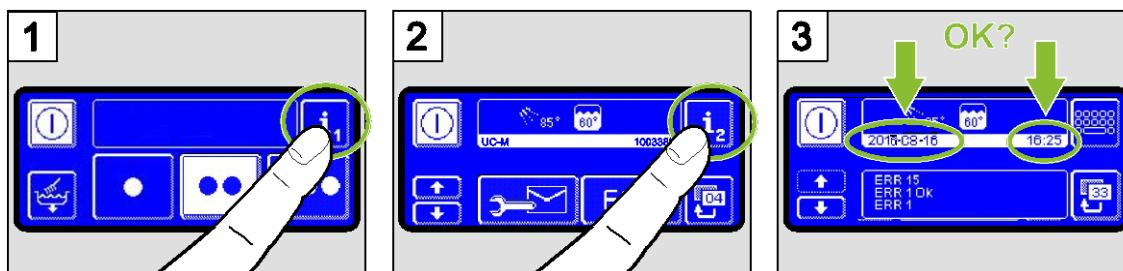
- Exit PIN Menu.



6. Checking the date and time

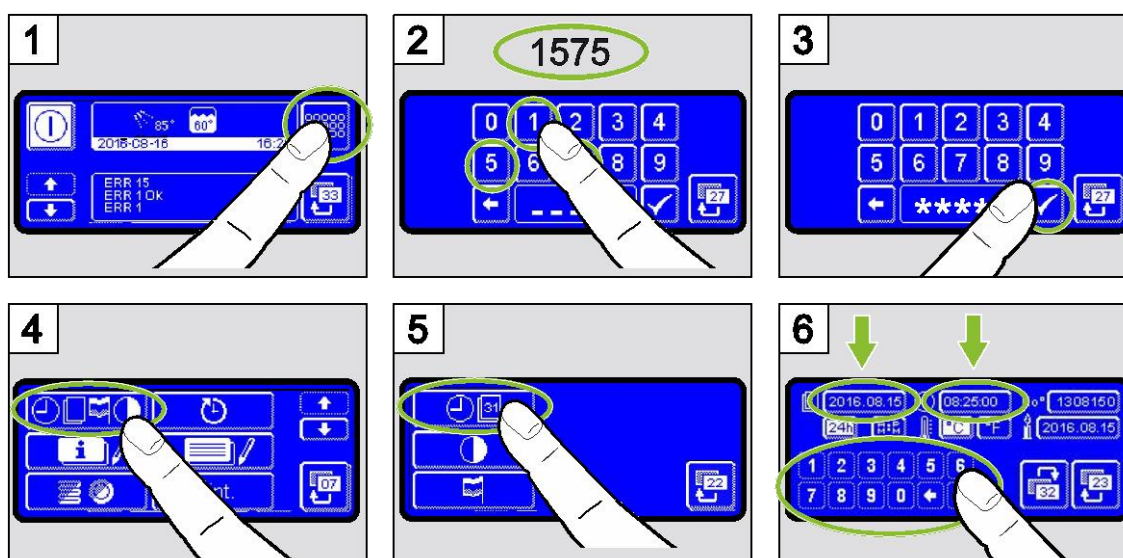
To make sure that the data transfer delivers correct results, the current date and time must be set correctly.

➤ Check settings.

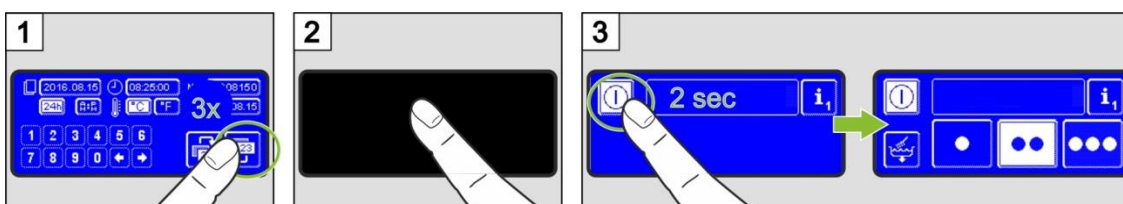


If the date and/or time are not set correctly:

➤ Adjust settings.



➤ Exit PIN menu:



Is your warewasher operational and successfully connected to your network? Then activate CONNECTED WASH on your machine now. You can find detailed instructions here:

[ACTIVATE CONNECTED WASH \(PAIRING\).](#)